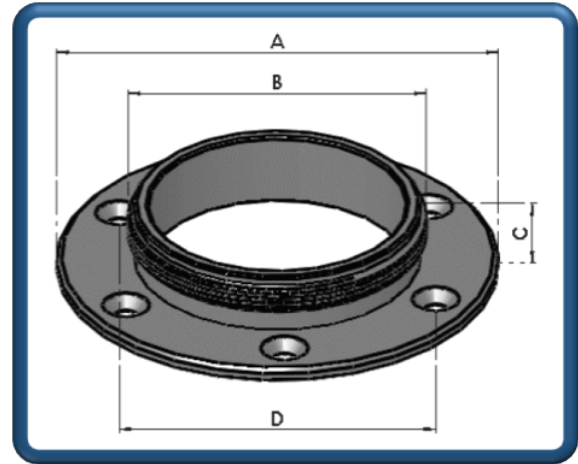




# Classic 250

## Classic 250 6 Hole Flange. Part Number: FL-AD-008 (CF250)



### **Specifications:**

**Options:**  
**Fixing Arrangement:**  
**Applications:**  
**Compatibilities:**

**Finish:**  
**Weight:**  
**Supplied With:**

N/A  
6 x M5 CSK Bolts  
Fuel, Oil & Water Tanks  
Compatible with Add Blue  
Operation Temperature -40°C to +80°C  
Natural Polished  
26.0 grams  
Flange  
Screw Pack (CSK Screws, Washers, Nyloc Nuts)  
Gasket

### **Materials:**

**Flange:**  
**Screw Pack:**  
**Gasket:**

Aluminium Alloy 6082/T6  
A2 Type Stainless Steel  
NBR Cork

### **Dimensions:**

**Outer Diameter A:**  
**Thread Specification B:**  
**Height C:**  
**PCD D:**

94.0mm  
2.5" x 18TPI WHITFORM Med Thread  
16.0mm  
6 x M5 CKS Bolts on a 76.2mm PCD

### **Optional('s):**

Viton A Gasket  
Classic 2.5" Monza Style Cap  
Classic 2.5" Flat Top Cap  
Classic 2.5" Bus Style Cap

***Fluid Containment – When It Matters***

Tell: +4420 8594 7990 / Fax: +4420 8594 7989 / [www.newton-equipment.com](http://www.newton-equipment.com) / [info@newton-equipment.com](mailto:info@newton-equipment.com)  
Registered in England. 6 Orwell Close/ Fairview Ind. Park/ Rainham/ Essex/ RM13 8UB